

## PEAK E-NEWS

Welcome to Issue 43 of Peak e-News.

In our first edition of e-News for 2011, we focus on a product line which is becoming more commonly found in wireline tool inventories worldwide. Now seen as a "must have" item, the Peak range of High Strength / High Temperature Magnets have consistently proven to be an invaluable resource to call upon during most intervention operations. The new Peak Wellbore Clean-Up Magnet is another very effective design which draws upon the key aspects of Peak's design philosophy - simplicity, increased flexibility with added functionality. For more information please contact [info@peakwellservices.com](mailto:info@peakwellservices.com)

## 1 1/4" TOOLSTRING PACKAGES

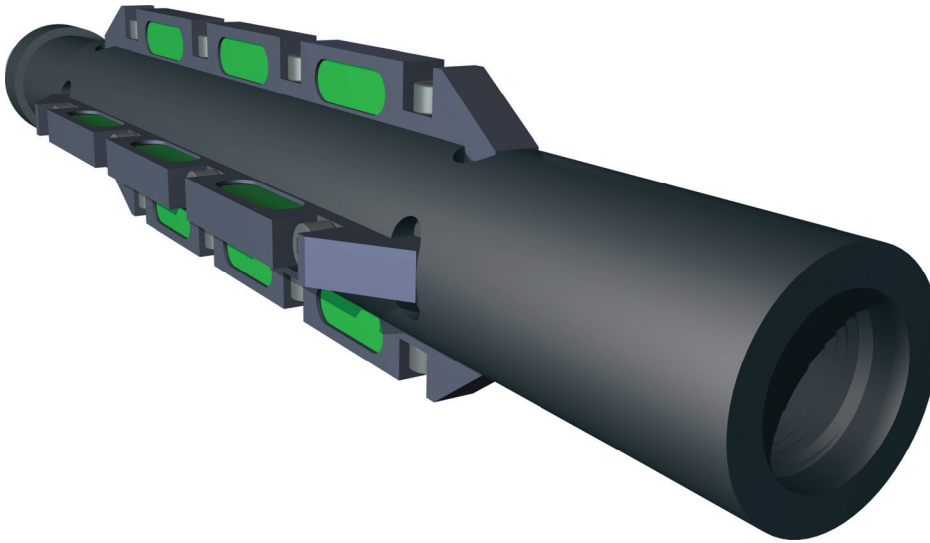
Peak have now added a 1 1/4" range of proprietary tools to complete the Toolstring product portfolio. A 1 1/4" toolstring is generally used in smaller bore completions, deployed through restricted internal diameters such as tubing patches or for servicing the annulus bore of a subsea completion. From Rope Sockets to Spang Jars, the 1 1/4" toolstring components can be supplied with Peak Quick Connect or Sucker Rod connections with 1.187" fishing necks. The smaller diameter tools incorporate most of the features seen in Peak's current range of larger diameter, premium toolstring components. For more information on the 1 1/4" Toolstring Packages please contact [info@peakwellservices.com](mailto:info@peakwellservices.com)

## PEAK WELLBORE CLEAN-UP MAGNET

Peak's High Strength / High Temperature Magnet range has further evolved to include the new Wellbore Clean-Up Magnet.

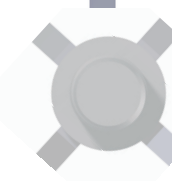
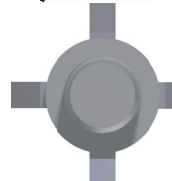
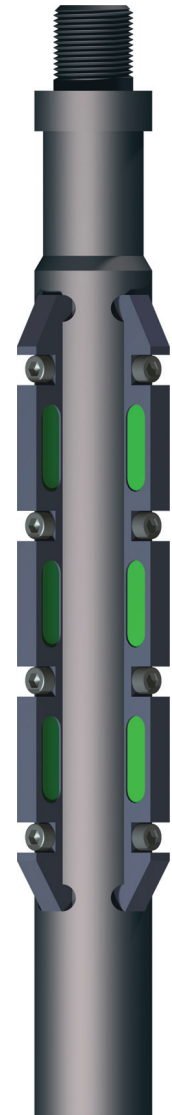
The Peak Wellbore Clean-Up Magnet was developed primarily to be run as an integral part of the toolstring to attract and retain ferrous debris within the rails of the Magnet during deployment on slickline. The Wellbore Clean-Up Magnet is also ideal for use as a stinger to be able to clear foreign, ferrous objects from within the body of a flow control device which may impede the operation or recovery of the device.

The standard Wellbore Clean-Up Magnet is of a simple design incorporating a stainless steel body with a series of equidistant rails which are fitted with specially designed magnetic inserts. The high strength magnetic inserts are operable in extreme temperatures (up to 300°C) and are resistant to high concentrations of CO<sub>2</sub> & H<sub>2</sub>S.



The interchangeable rails allow quick and easy replacement in the event that remedial repairs are required or for simple adjustment of the running diameter, by adding a smaller or larger rail to suit a specific application. The Wellbore Clean-Up Magnet can be supplied to suit most tubing sizes with connection, length and body material options to suit customer requirements. The Peak Wellbore Clean-Up concept can be extended to be run on all available deployment options, including Coiled Tubing and HWO.

The Wellbore Clean-Up Magnet can complement Peak's fishing packages which are available for sale or rent. For more information contact your local representative or alternatively e-mail Peak on [info@peakwellservices.com](mailto:info@peakwellservices.com)



E [info@peakwellservices.com](mailto:info@peakwellservices.com)  
www.peakwellservices.com

**ABERDEEN**  
P +44 (0) 1224 562240  
F +44 (0) 1224 652969

**PERTH**  
P +61 8 9270 0500  
F +61 8 9270 0555

## NEXT MONTH - IMPACT DATA ACQUISITION SYSTEM

In February's edition of e-News, we present the Impact Data Acquisition System (IDAS). The surface test facility is designed to accurately measure the impact generation and movement of any toolstring configuration, at any chosen point within the string, to provide accurate, detailed data on toolstring performance.

### NEXT ISSUE:

- Impact Data Acquisition System

"Think before you print."

- Please consider the environment before printing

UNSUBSCRIBE